

PANEL | Basic Installation Guide

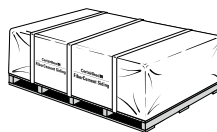
DOs

1 BEFORE YOU BEGIN

- Use these tips as a guide, not as a replacement for the Allura Fiber Cement Installation Manual which can be downloaded at www.allurausa.com under the Resources Tab in the Technical section. Review the manual in its entirety and all applicable building codes prior to installation.
- Wear appropriate safety equipment—dust mask or respirator, eye protection, hard hat, and cut-resistant gloves as appropriate.

2 STORAGE & HANDLING

- Keep panel covered, off the ground on a clean, flat, and level surface that is protected from direct exposure to weather.
- Carry panel by its narrow edge.



3 SHEATHING & WRAPS

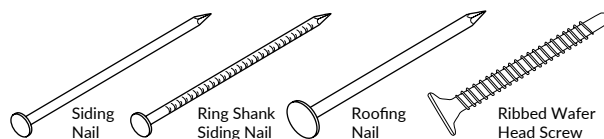
- Vertical panel must be installed to structural framing when using non-structural sheathing, builder board, foam-type sheathings and gypsum board.
- Panel must be applied over a water-resistant barrier in accordance with local building code.

4 CUTTING

- Use appropriate personal protective equipment (PPE). Refer to the Fiber Cement Installation Manual for details.
- Cut fiber cement outdoors when possible.
- Use a polycrystalline diamond-tipped fiber cement blade for circular, miter, and table saws.
- When using a circular saw or mechanical shears, cut fiber cement panel face down.
- When cutting Allura Fiber Cement Panel with Allura ColorMax® finish, leave the protective film on the panel until it is nailed to the substrate, then remove before applying the next course.

5 FASTENERS

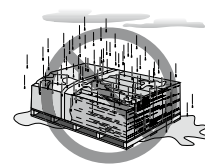
- We recommend using non-corrosive, double hot-dipped galvanized or stainless steel nails.



DON'Ts

- Do not install questionable product. Contact Allura Consumer Service at 1-844-625-5872

- Never install panel that is wet.



- Do not fasten fiber cement panel over non-structural sheathing thicker than 1" without re-establishing a structural fastening surface.

- Do not score and snap fiber cement.
- Do not cut fiber cement without proper ventilation.

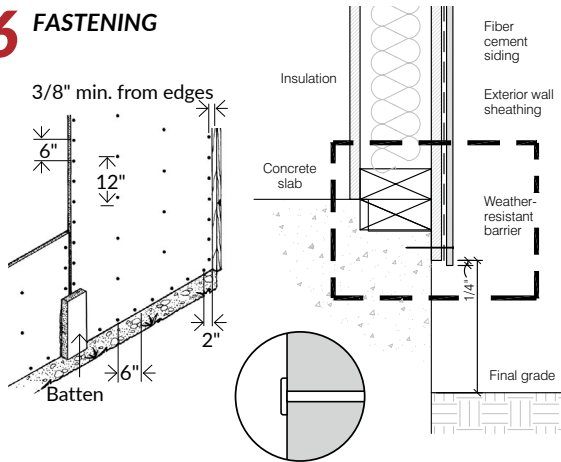
- Do not use D-head nails, staples, finishing nails and/or construction adhesives to install fiber cement panel.



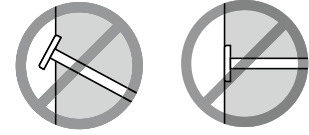
DOs

DON'Ts

6 FASTENING

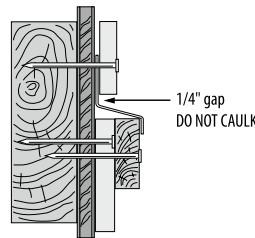


- Fasteners must penetrate a minimum of 1-1/4" into structural framing.
- Structural rated sheathing must be a minimum of 7/16" OSB or 1/2" plywood.
- Fasteners must be flush to the surface of material.
- Fasteners must be a minimum 3/8" from edges and 2" away from corners.
- Nailing pattern shown in diagram
- Do not counter sink or angle fasteners.



7 FLASHING

- Use durable, non-corrosive flashing that is non-reactive with fiber cement.
- There must be 1/4" clearance between the bottom of the fiber cement and horizontal flashing.



- Do not use uncoated aluminum or metal materials.
- Do not caulk "Z" flashing at horizontal openings.

8 CLEARANCES

- Hold back panel a minimum of 6" above final grade.
- Allow a minimum of 1"-2" above roof lines, porches, decks, etc.
- Leave 1/8" gap between panel and trim surrounding windows and doors.
- Do not install fiber cement directly in contact with surfaces that collect water.
- Do not install fiber cement products tight against trim.

9 PAINTING & CAULKING

- Use high-quality 100% acrylic latex paint or stain.
- Use high-quality, exterior grade, color-matched or paintable caulk or sealant that meets ASTM standard C920 and is compatible with both fiber cement siding and the trim materials.
- Be sure to caulk wherever the panel meets the trim, non-self-flashing penetrations, and around all windows and doors.
- If using Allura Fiber Cement Panel with ColorMax® finish, please refer to the Allura Installation Manual for best handling and touch up practices.



- Never apply oil-based paint or stains.
- Do not caulk the bottom of the horizontal joint that is above the "Z" flashing.

WARNING: AVOID BREATHING SILICA DUST

Allura siding products contain respirable crystalline silica, which is known to the State of California to cause cancer and is considered by IARC and NIOSH to be a cause from some occupational sources. Breathing excessive amounts of respirable silica dust can also cause a disabling and potentially fatal lung disease called silicosis, and has been linked with other diseases. Some studies suggest smoking may increase these risks. During installation or handling: (1) work in outdoor areas with ample ventilation; (2) use fiber cement shears for cutting or, where not feasible, use a dust-reducing circular saw attached to a HEPA vacuum; (3) warn others in the immediate area; (4) wear a properly fitted, NIOSH-approved dust mask or respirator (e.g. N-95) in accordance with applicable government regulations and manufacturer instructions to further limit respirable silica exposures. During clean-up, use HEPA vacuums or wet methods, never dry sweep. For further information, refer to our installation guides and Material Safety Data Sheet available at www.maxitile.com or by calling (800) 451-2003. **FAILURE TO ADHERE TO OUR WARNINGS, MSDS, AND INSTALLATION GUIDES MAY CAUSE SERIOUS PERSONAL INJURY OR DEATH.**